

**Return of Organization Exempt From Income Tax**

**2009**

Department of the Treasury  
Internal Revenue Service

Under section 501(c), 527, or 4947(a)(1) of the Internal Revenue Code  
(except black lung benefit trust or private foundation)

▶ The organization may have to use a copy of this return to satisfy state reporting requirements.

**Open to Public Inspection**

**For the 2009 calendar year, or tax year beginning , 2009, and ending ,**

|  |  |   |   |  |  |
|--|--|---|---|--|--|
| <b>B</b> Check if applicable:<br><input type="checkbox"/> Address change<br><input type="checkbox"/> Name change<br><input type="checkbox"/> Initial return<br><input type="checkbox"/> Termination<br><input type="checkbox"/> Amended return<br><input type="checkbox"/> Application pending | <b>C</b> Please use IRS label or print or type. See specific instructions.<br>SOUTHERN OREGON HUMANE SOCIETY<br>2910 TABLE ROCK ROAD<br>MEDFORD, OR 97501-1518 | <b>D</b> Employer Identification Number<br>93-0391640   | <b>E</b> Telephone number<br>541-779-3215 | <b>G</b> Gross receipts \$ <u>2,676,654.</u> | <b>H(a)</b> Is this a group return for affiliates? <input type="checkbox"/> Yes <input checked="" type="checkbox"/> No<br><b>H(b)</b> Are all affiliates included? <input type="checkbox"/> Yes <input type="checkbox"/> No<br><small>If 'No,' attach a list. (see instructions)</small> |
| <b>F</b> Name and address of principal officer: <u>Bill Templeman</u><br><u>Same As C Above</u>  |  | <b>I</b> Tax-exempt status <input checked="" type="checkbox"/> 501(c) ( <u>3</u> ) ◀ (insert no.) <input type="checkbox"/> 4947(a)(1) or <input type="checkbox"/> 527 |   |  |  |
| <b>J</b> Website: ▶ <u>www.southernoregonhumane.org</u>  |  | <b>H(c)</b> Group exemption number ▶  |   |  |  |
| <b>K</b> Form of organization: <input checked="" type="checkbox"/> Corporation <input type="checkbox"/> Trust <input type="checkbox"/> Association <input type="checkbox"/> Other ▶  |  | <b>L</b> Year of Formation: <u>1928</u>   |   | <b>M</b> State of legal domicile: <u>OR</u>  |  |

**Part I Summary**

|            |  |                          |                     |
|------------|--|--------------------------|---------------------|
| <b>1</b>   | Briefly describe the organization's mission or most significant activities: <u>The mission of the Organization is to improve the lives of pets and people through sustainable programs of education, adoptions, and spaying and neutering. The Organization's vision is to solve the problem of pet overpopulation and eliminate the unnecessary cruelty that results.</u> |                          |                     |
| <b>2</b>   | Check this box <input type="checkbox"/> if the organization discontinued its operations or disposed of more than 25% of its assets.  |                          |                     |
| <b>3</b>   | Number of voting members of the governing body (Part VI, line 1a) .....  | <b>3</b>                 | 12                  |
| <b>4</b>   | Number of independent voting members of the governing body (Part VI, line 1b) .....  | <b>4</b>                 | 12                  |
| <b>5</b>   | Total number of employees (Part V, line 2a) .....  | <b>5</b>                 | 33                  |
| <b>6</b>   | Total number of volunteers (estimate if necessary) .....   | <b>6</b>                 | 254                 |
| <b>7a</b>  | Total gross unrelated business revenue from Part VIII, column (C), line 12 .....   | <b>7a</b>                | 0.                  |
| <b>7b</b>  | Net unrelated business taxable income from Form 990-T, line 34 .....   | <b>7b</b>                | 0.                  |
| <b>8</b>   | Contributions and grants (Part VIII, line 1h) .....  | <b>Prior Year</b>        | <b>Current Year</b> |
| <b>9</b>   | Program service revenue (Part VIII, line 2g) .....   | 484,203.                 | 527,477.            |
| <b>10</b>  | Investment income (Part VIII, column (A), lines 3, 4, and 7d) .....  | 160,326.                 | 189,636.            |
| <b>11</b>  | Other revenue (Part VIII, column (A), lines 5, 6d, 8c, 9c, 10c, and 11e) .....   | 4,754.                   | -1,156,223.         |
| <b>12</b>  | Total revenue – add lines 8 through 11 (must equal Part VIII, column (A), line 12) .....   | 29,364.                  | 74,338.             |
| <b>13</b>  | Grants and similar amounts paid (Part IX, column (A), lines 1-3) .....   | 678,647.                 | -364,772.           |
| <b>14</b>  | Benefits paid to or for members (Part IX, column (A), line 4) .....  |                          |                     |
| <b>15</b>  | Salaries, other compensation, employee benefits (Part IX, column (A), lines 5-10) .....  | 489,359.                 | 483,790.            |
| <b>16a</b> | Professional fundraising fees (Part IX, column (A), line 11e) .....  |                          |                     |
| <b>b</b>   | Total fundraising expenses (Part IX, column (D), line 25) ▶ <u>76,907.</u>   |                          |                     |
| <b>17</b>  | Other expenses (Part IX, column (A), lines 11a-11d, 11f-24f) .....   | 298,859.                 | 328,313.            |
| <b>18</b>  | Total expenses. Add lines 13-17 (must equal Part IX, column (A), line 25) .....  | 788,218.                 | 812,103.            |
| <b>19</b>  | Revenue less expenses. Subtract line 18 from line 12 .....   | -109,571.                | -1,176,875.         |
| <b>20</b>  | Total assets (Part X, line 16) .....   | <b>Beginning of Year</b> | <b>End of Year</b>  |
| <b>21</b>  | Total liabilities (Part X, line 26) .....  | 3,639,358.               | 319,772.            |
| <b>22</b>  | Net assets or fund balances. Subtract line 21 from line 20 .....   | 2,331,669.               | 438,548.            |
|            |  | 1,307,689.               | -118,776.           |

**Part II Signature Block**

Under penalties of perjury, I declare that I have examined this return, including accompanying schedules and statements, and to the best of my knowledge and belief, it is true, correct, and complete. Declaration of preparer (other than officer) is based on all information of which preparer has any knowledge.

|                  |  |               |  |
|------------------|--|---------------|--|
| <b>Sign Here</b> | ▶ _____<br>Signature of officer          | _____<br>Date |  |
|                  | ▶ _____<br>Type or print name and title. |               |  |

|                                 |  |            |   |  |
|---------------------------------|--|------------|---|--|
| <b>Paid Preparer's Use Only</b> | Preparer's signature ▶ _____<br>Firm's name (or yours if self-employed), address, and ZIP + 4 ▶ <u>Reid, Hanna &amp; Company LLP CPAs</u><br><u>1101 Siskiyou Boulevard</u><br><u>Ashland, OR 97520-2238</u> | Date _____ | Check if self-employed <input type="checkbox"/> | Preparer's identifying number (see instructions)<br><u>P00155219</u> |
|                                 |  |            |   | EIN ▶ <u>93-0845347</u><br>Phone no. ▶ <u>(541) 482-3711</u>         |

May the IRS discuss this return with the preparer shown above? (see instructions)  Yes  No

Part III Statement of Program Service Accomplishments

1 Briefly describe the organization's mission:

See Schedule O

2 Did the organization undertake any significant program services during the year which were not listed on the prior Form 990 or 990-EZ? Yes No

Yes No

If 'Yes,' describe these new services on Schedule O.

3 Did the organization cease conducting, or make significant changes in how it conducts, any program services? Yes No

Yes No

If 'Yes,' describe these changes on Schedule O.

4 Describe the exempt purpose achievements for each of the organization's three largest program services by expenses. Section 501(c)(3) and 501(c)(4) organizations and section 4947(a)(1) trusts are required to report the amount of grants and allocations to others, the total expenses, and revenue, if any, for each program service reported.

4a (Code: ) (Expenses \$ 363,019. including grants of \$ ) (Revenue \$ 191,718.)

During 2009 the Humane Society placed a record 1,367 animals into permanent homes. Of the animals placed, many had been transferred to the Humane Society by other animal welfare agencies throughout the region. Virtually all the animals transferred in were scheduled for euthanasia and would likely have died without the services of the Humane Society.

4b (Code: ) (Expenses \$ 226,887. including grants of \$ ) (Revenue \$ )

During 2009 the Humane Society provided medical care to many dogs and cats during the time the animals were under the Humane Society's care. These services included basic vaccinations, general worming, microchip implants, urgent care, minor surgeries, and other necessary procedures to improve the pet's health during their time at the Humane Society. Additionally, 856 animals were sterilized through spay/neuter surgery, preventing more unwanted animals from being born.

4c (Code: ) (Expenses \$ 58,342. including grants of \$ ) (Revenue \$ )

The Humane Society helped to change the lives of over 28 at-risk children through its innovative human and humane education program HELP. This program not only changes the lives of children in numerous ways, it also trains unruly and untrained dogs temporarily living at the Humane Society to help them find homes more quickly. Additionally, 974 students and adults learned about responsible pet care and respect for all living beings through the general humane education programs.

4d Other program services. (Describe in Schedule O.)

(Expenses \$ including grants of \$ ) (Revenue \$ )

4e Total program service expenses 648,248.

**Part IV Checklist of Required Schedules**

|     |   | Yes | No |
|-----|---|-----|----|
| 1   | Is the organization described in section 501(c)(3) or 4947(a)(1) (other than a private foundation)? <i>If 'Yes,' complete Schedule A.</i>   | X   |    |
| 2   | Is the organization required to complete Schedule B, Schedule of Contributors?  | X   |    |
| 3   | Did the organization engage in direct or indirect political campaign activities on behalf of or in opposition to candidates for public office? <i>If 'Yes,' complete Schedule C, Part I.</i>  |     | X  |
| 4   | <b>Section 501(c)(3) organizations.</b> Did the organization engage in lobbying activities? <i>If 'Yes,' complete Schedule C, Part II.</i>  |     | X  |
| 5   | <b>Section 501(c)(4), 501(c)(5), and 501(c)(6) organizations.</b> Is the organization subject to the section 6033(e) notice and reporting requirement and proxy tax? <i>If 'Yes,' complete Schedule C, Part III.</i>  |     |    |
| 6   | Did the organization maintain any donor advised funds or any similar funds or accounts where donors have the right to provide advice on the distribution or investment of amounts in such funds or accounts? <i>If 'Yes,' complete Schedule D, Part I.</i>  |     | X  |
| 7   | Did the organization receive or hold a conservation easement, including easements to preserve open space, the environment, historic land areas or historic structures? <i>If 'Yes,' complete Schedule D, Part II.</i>                                       |     | X  |
| 8   | Did the organization maintain collections of works of art, historical treasures, or other similar assets? <i>If 'Yes,' complete Schedule D, Part III.</i>   |     | X  |
| 9   | Did the organization report an amount in Part X, line 21; serve as a custodian for amounts not listed in Part X; or provide credit counseling, debt management, credit repair, or debt negotiation services? <i>If 'Yes,' complete Schedule D, Part IV.</i> |     | X  |
| 10  | Did the organization, directly or through a related organization, hold assets in term, permanent, or quasi-endowments? <i>If 'Yes,' complete Schedule D, Part V.</i>  | X   |    |
| 11  | Is the organization's answer to any of the following questions 'Yes'? <i>If so, complete Schedule D, Parts VI, VII, VIII, IX, or X as applicable.</i>   | X   |    |
|     | • Did the organization report an amount for land, buildings and equipment in Part X, line 10? <i>If 'Yes,' complete Schedule D, Part VI.</i>  |     |    |
|     | • Did the organization report an amount for investments— other securities in Part X, line 12 that is 5% or more of its total assets reported in Part X, line 16? <i>If 'Yes,' complete Schedule D, Part VII.</i>  |     |    |
|     | • Did the organization report an amount for investments— program related in Part X, line 13 that is 5% or more of its total assets reported in Part X, line 16? <i>If 'Yes,' complete Schedule D, Part VIII.</i>  |     |    |
|     | • Did the organization report an amount for other assets in Part X, line 15 that is 5% or more of its total assets reported in Part X, line 16? <i>If 'Yes,' complete Schedule D, Part IX.</i>  |     |    |
|     | • Did the organization report an amount for other liabilities in Part X, line 25? <i>If 'Yes,' complete Schedule D, Part X.</i>   |     |    |
|     | • Did the organization's separate or consolidated financial statements for the tax year include a footnote that addresses the organization's liability for uncertain tax positions under FIN 48? <i>If 'Yes,' complete Schedule D, Part X.</i>              |     |    |
| 12  | Did the organization obtain separate, independent audited financial statement for the tax year? <i>If 'Yes,' complete Schedule D, Parts XI, XII, and XIII.</i>  |     | X  |
| 12A | Was the organization included in consolidated, independent audited financial statement for the tax year? <i>If 'Yes,' completing Schedule D, Parts XI, XII, and XIII is optional.</i>   |     |    |
|     |   | Yes | No |
|     |   |     | X  |
| 13  | Is the organization a school described in section 170(b)(1)(A)(ii)? <i>If 'Yes,' complete Schedule E.</i>   |     | X  |
| 14a | Did the organization maintain an office, employees, or agents outside of the United States?   |     | X  |
| 14b | Did the organization have aggregate revenues or expenses of more than \$10,000 from grantmaking, fundraising, business, and program service activities outside the United States? <i>If 'Yes,' complete Schedule F, Part I.</i>                             |     | X  |
| 15  | Did the organization report on Part IX, column (A), line 3, more than \$5,000 of grants or assistance to any organization or entity located outside the United States? <i>If 'Yes,' complete Schedule F, Part II.</i>                                       |     | X  |
| 16  | Did the organization report on Part IX, column (A), line 3, more than \$5,000 of aggregate grants or assistance to individuals located outside the United States? <i>If 'Yes,' complete Schedule F, Part III.</i>   |     | X  |
| 17  | Did the organization report a total of more than \$15,000 of expenses for professional fundraising services on Part IX, column (A), lines 6 and 11e? <i>If 'Yes,' complete Schedule G, Part I.</i>  |     | X  |
| 18  | Did the organization report more than \$15,000 total of fundraising event gross income and contributions on Part VIII, lines 1c and 8a? <i>If 'Yes,' complete Schedule G, Part II.</i>  | X   |    |
| 19  | Did the organization report more than \$15,000 of gross income from gaming activities on Part VIII, line 9a? <i>If 'Yes,' complete Schedule G, Part III.</i>  |     | X  |
| 20  | Did the organization operate one or more hospitals? <i>If 'Yes,' complete Schedule H.</i>   |     | X  |

**Part IV Checklist of Required Schedules (continued)**

|  | Yes | No |
|--|-----|----|
| <b>21</b> Did the organization report more than \$5,000 of grants and other assistance to governments and organizations in the United States on Part IX, column (A), line 1? <i>If 'Yes,' complete Schedule I, Parts I and II.</i> .....   |     | X  |
| <b>22</b> Did the organization report more than \$5,000 of grants and other assistance to individuals in the United States on Part IX, column (A), line 2? <i>If 'Yes,' complete Schedule I, Parts I and III.</i> .....  |     | X  |
| <b>23</b> Did the organization answer 'Yes' to Part VII, Section A, line 3, 4, or 5 about compensation of the organization's current and former officers, directors, trustees, key employees, and highest compensated employees? <i>If 'Yes,' complete Schedule J.</i> .....                               |     | X  |
| <b>24a</b> Did the organization have a tax-exempt bond issue with an outstanding principal amount of more than \$100,000 as of the last day of the year, and that was issued after December 31, 2002? <i>If 'Yes,' answer lines 24b through 24d and complete Schedule K. If 'No,' go to line 25.</i> ..... |     | X  |
| <b>b</b> Did the organization invest any proceeds of tax-exempt bonds beyond a temporary period exception? .....   |     |    |
| <b>c</b> Did the organization maintain an escrow account other than a refunding escrow at any time during the year to defease any tax-exempt bonds? .....  |     |    |
| <b>d</b> Did the organization act as an 'on behalf of' issuer for bonds outstanding at any time during the year? .....   |     |    |
| <b>25a Section 501(c)(3) and 501(c)(4) organizations.</b> Did the organization engage in an excess benefit transaction with a disqualified person during the year? <i>If 'Yes,' complete Schedule L, Part I.</i> .....   |     | X  |
| <b>b</b> Is the organization aware that it engaged in an excess benefit transaction with a disqualified person in a prior year, and that the transaction has not been reported on any of the organization's prior Forms 990 or 990-EZ? <i>If 'Yes,' complete Schedule L, Part I.</i> .....                 |     | X  |
| <b>26</b> Was a loan to or by a current or former officer, director, trustee, key employee, highly compensated employee, or disqualified person outstanding as of the end of the organization's tax year? <i>If 'Yes,' complete Schedule L, Part II.</i> .....   |     | X  |
| <b>27</b> Did the organization provide a grant or other assistance to an officer, director, trustee, key employee, substantial contributor, or a grant selection committee member, or to a person related to such an individual? <i>If 'Yes,' complete Schedule L, Part III.</i> .....                     |     | X  |
| <b>28</b> Was the organization a party to a business transaction with one of the following parties (see Schedule L, Part IV instructions for applicable filing thresholds, conditions, and exceptions):  |     |    |
| <b>a</b> A current or former officer, director, trustee, or key employee? <i>If 'Yes,' complete Schedule L, Part IV.</i> .....   |     | X  |
| <b>b</b> A family member of a current or former officer, director, trustee, or key employee? <i>If 'Yes,' complete Schedule L, Part IV.</i> .....  |     | X  |
| <b>c</b> An entity of which a current or former officer, director, trustee, or key employee of the organization (or a family member) was an officer, director, trustee, or direct or indirect owner? <i>If 'Yes,' complete Schedule L, Part IV.</i> .....  |     | X  |
| <b>29</b> Did the organization receive more than \$25,000 in non-cash contributions? <i>If 'Yes,' complete Schedule M.</i> .....   |     | X  |
| <b>30</b> Did the organization receive contributions of art, historical treasures, or other similar assets, or qualified conservation contributions? <i>If 'Yes,' complete Schedule M.</i> .....   |     | X  |
| <b>31</b> Did the organization liquidate, terminate, or dissolve and cease operations? <i>If 'Yes,' complete Schedule N, Part I.</i> .....   |     | X  |
| <b>32</b> Did the organization sell, exchange, dispose of, or transfer more than 25% of its net assets? <i>If 'Yes,' complete Schedule N, Part II.</i> .....   |     | X  |
| <b>33</b> Did the organization own 100% of an entity disregarded as separate from the organization under Regulations sections 301.7701-2 and 301.7701-3? <i>If 'Yes,' complete Schedule R, Part I.</i> .....   |     | X  |
| <b>34</b> Was the organization related to any tax-exempt or taxable entity? <i>If 'Yes,' complete Schedule R, Parts II, III, IV, and V, line 1.</i> .....  |     | X  |
| <b>35</b> Is any related organization a controlled entity within the meaning of section 512(b)(13)? <i>If 'Yes,' complete Schedule R, Part V, line 2.</i> .....  |     | X  |
| <b>36 Section 501(c)(3) organizations.</b> Did the organization make any transfers to an exempt non-charitable related organization? <i>If 'Yes,' complete Schedule R, Part V, line 2.</i> .....   |     | X  |
| <b>37</b> Did the organization conduct more than 5% of its activities through an entity that is not a related organization and that is treated as a partnership for federal income tax purposes? <i>If 'Yes,' complete Schedule R, Part VI.</i> .....  |     | X  |
| <b>38</b> Did the organization complete Schedule O and provide explanations in Schedule O for Part VI, lines 11 and 19?<br><b>Note.</b> All Form 990 filers are required to complete Schedule O. ....  | X   |    |

BAA

Form 990 (2009)

**Part V Statements Regarding Other IRS Filings and Tax Compliance**

|   |  | Yes | No |
|---|--|-----|----|
| <b>1 a</b>  | Enter the number reported in Box 3 of form 1096, Annual Summary and Transmittal of U.S. Information Returns. Enter -0- if not applicable . . . . .   | 0   |    |
| <b>1 b</b>  | Enter the number of Forms W-2G included in line 1a. Enter -0- if not applicable . . . . .  | 0   |    |
| <b>1 c</b>  | Did the organization comply with backup withholding rules for reportable payments to vendors and reportable gaming (gambling) winnings to prize winners? . . . . .   |     |    |
| <b>2 a</b>  | Enter the number of employees reported on Form W-3, Transmittal of Wage and Tax Statements, filed for the calendar year ending with or within the year covered by this return . . . . .  | 33  |    |
| <b>2 b</b>  | If at least one is reported on line 2a, did the organization file all required federal employment tax returns? . . . . .   | X   |    |
| <b>Note.</b> If the sum of lines 1a and 2a is greater than 250, you may be required to e-file this return. (see instructions) |  |     |    |
| <b>3 a</b>  | Did the organization have unrelated business gross income of \$1,000 or more during the year covered by this return? . . . . .   |     | X  |
| <b>3 b</b>  | If 'Yes' has it filed a Form 990-T for this year? If 'No,' provide an explanation in Schedule O . . . . .  |     |    |
| <b>4 a</b>  | At any time during the calendar year, did the organization have an interest in, or a signature or other authority over, a financial account in a foreign country (such as a bank account, securities account, or other financial account)? . . . . .                                   |     | X  |
| <b>4 b</b>  | If 'Yes,' enter the name of the foreign country: ▶ _____<br>See the instructions for exceptions and filing requirements for Form TD F 90-22.1, Report of Foreign Bank and Financial Accounts.  |     |    |
| <b>5 a</b>  | Was the organization a party to a prohibited tax shelter transaction at any time during the tax year? . . . . .  |     | X  |
| <b>5 b</b>  | Did any taxable party notify the organization that it was or is a party to a prohibited tax shelter transaction? . . . . .   |     | X  |
| <b>5 c</b>  | If 'Yes,' to line 5a or 5b, did the organization file Form 8886-T, Disclosure by Tax-Exempt Entity Regarding Prohibited Tax Shelter Transaction? . . . . .   |     |    |
| <b>6 a</b>  | Does the organization have annual gross receipts that are normally greater than \$100,000, and did the organization solicit any contributions that were not tax deductible? . . . . .  |     | X  |
| <b>6 b</b>  | If 'Yes,' did the organization include with every solicitation an express statement that such contributions or gifts were not deductible? . . . . .  |     |    |
| <b>7 Organizations that may receive deductible contributions under section 170(c).</b>  |  |     |    |
| <b>7 a</b>  | Did the organization receive a payment in excess of \$75 made partly as a contribution and partly for goods and services provided to the payor? . . . . .  |     | X  |
| <b>7 b</b>  | If 'Yes,' did the organization notify the donor of the value of the goods or services provided? . . . . .  |     |    |
| <b>7 c</b>  | Did the organization sell, exchange, or otherwise dispose of tangible personal property for which it was required to file Form 8282? . . . . .   |     | X  |
| <b>7 d</b>  | If 'Yes,' indicate the number of Forms 8282 filed during the year. . . . .   |     |    |
| <b>7 e</b>  | Did the organization, during the year, receive any funds, directly or indirectly, to pay premiums on a personal benefit contract? . . . . .  |     | X  |
| <b>7 f</b>  | Did the organization, during the year, pay premiums, directly or indirectly, on a personal benefit contract? . . . . .   |     | X  |
| <b>7 g</b>  | For all contributions of qualified intellectual property, did the organization file Form 8899 as required? . . . . .   |     |    |
| <b>7 h</b>  | For contributions of cars, boats, airplanes, and other vehicles, did the organization file a Form 1098-C as required? . . . . .  | X   |    |
| <b>8</b>  | <b>Sponsoring organizations maintaining donor advised funds and section 509(a)(3) supporting organizations.</b> Did the supporting organization, or a donor advised fund maintained by a sponsoring organization, have excess business holdings at any time during the year? . . . . . |     |    |
| <b>9 Sponsoring organizations maintaining donor advised funds.</b>  |  |     |    |
| <b>9 a</b>  | Did the organization make any taxable distributions under section 4966? . . . . .  |     |    |
| <b>9 b</b>  | Did the organization make any distribution to a donor, donor advisor, or related person? . . . . .   |     |    |
| <b>10 Section 501(c)(7) organizations. Enter:</b>   |  |     |    |
| <b>10 a</b>   | Initiation fees and capital contributions included on Part VIII, line 12 . . . . .   |     |    |
| <b>10 b</b>   | Gross Receipts, included on Form 990, Part VIII, line 12, for public use of club facilities. . . . .   |     |    |
| <b>11 Section 501(c)(12) organizations. Enter:</b>  |  |     |    |
| <b>11 a</b>   | Gross income from other members or shareholders . . . . .  |     |    |
| <b>11 b</b>   | Gross income from other sources (Do not net amounts due or paid to other sources against amounts due or received from them.) . . . . .   |     |    |
| <b>12 a</b>   | <b>Section 4947(a)(1) non-exempt charitable trusts.</b> Is the organization filing Form 990 in lieu of Form 1041? . . . . .  |     |    |
| <b>12 b</b>   | If 'Yes,' enter the amount of tax-exempt interest received or accrued during the year. . . . .   |     |    |

**Part VI Governance, Management and Disclosure** For each 'Yes' response to lines 2 through 7b below, and for a 'No' response to line 8a, 8b, or 10b below, describe the circumstances, processes, or changes in Schedule O. See instructions.

**Section A. Governing Body and Management**

|     |   | Yes | No |
|-----|---|-----|----|
| 1 a | Enter the number of voting members of the governing body  |     |    |
| 1 b | Enter the number of voting members that are independent   |     |    |
| 2   | Did any officer, director, trustee, or key employee have a family relationship or a business relationship with any other officer, director, trustee or key employee?  |     | X  |
| 3   | Did the organization delegate control over management duties customarily performed by or under the direct supervision of officers, directors or trustees, or key employees to a management company or other person? |     | X  |
| 4   | Did the organization make any significant changes to its organizational documents since the prior Form 990 was filed?   |     | X  |
| 5   | Did the organization become aware during the year of a material diversion of the organization's assets?   |     | X  |
| 6   | Does the organization have members or stockholders?   |     | X  |
| 7 a | Does the organization have members, stockholders, or other persons who may elect one or more members of the governing body?   |     | X  |
| 7 b | Are any decisions of the governing body subject to approval by members, stockholders, or other persons?   |     | X  |
| 8   | Did the organization contemporaneously document the meetings held or written actions undertaken during the year by the following:   |     |    |
| 8 a | The governing body?   | X   |    |
| 8 b | Each committee with authority to act on behalf of the governing body?   | X   |    |
| 9   | Is there any officer, director or trustee, or key employee listed in Part VII, Section A, who cannot be reached at the organization's mailing address? If 'Yes,' provide the names and addresses in Schedule O.     |     | X  |

**Section B. Policies** (This Section B requests information about policies not required by the Internal Revenue Code.)

|      |  | Yes | No |
|------|--|-----|----|
| 10 a | Does the organization have local chapters, branches, or affiliates?  |     | X  |
| 10 b | If 'Yes,' does the organization have written policies and procedures governing the activities of such chapters, affiliates, and branches to ensure their operations are consistent with those of the organization?   |     |    |
| 11   | Has the organization provided a copy of this Form 990 to all members of its governing body before filing the form?   | X   |    |
| 11 A | Describe in Schedule O the process, if any, used by the organization to review this Form 990. See Schedule O   |     |    |
| 12 a | Does the organization have a written conflict of interest policy? If 'No,' go to line 13.  | X   |    |
| 12 b | Are officers, directors or trustees, and key employees required to disclose annually interests that could give rise to conflicts?  | X   |    |
| 12 c | Does the organization regularly and consistently monitor and enforce compliance with the policy? If 'Yes,' describe in Schedule O how this is done. See Schedule O.  | X   |    |
| 13   | Does the organization have a written whistleblower policy?   |     | X  |
| 14   | Does the organization have a written document retention and destruction policy?  |     | X  |
| 15   | Did the process for determining compensation of the following persons include a review and approval by independent persons, comparability data, and contemporaneous substantiation of the deliberation and decision?   |     |    |
| 15 a | The organization's CEO, Executive Director, or top management official.  | X   |    |
| 15 b | Other officers of key employees of the organization. If 'Yes' to line 15a or 15b, describe the process in Schedule O. (See instructions.)  |     | X  |
| 16 a | Did the organization invest in, contribute assets to, or participate in a joint venture or similar arrangement with a taxable entity during the year?  |     | X  |
| 16 b | If 'Yes,' has the organization adopted a written policy or procedure requiring the organization to evaluate its participation in joint venture arrangements under applicable federal tax law, and taken steps to safeguard the organization's exempt status with respect to such arrangements? |     |    |

**Section C. Disclosures**

- 17 List the states with which a copy of this Form 990 is required to be filed OR
- 18 Section 6104 requires an organization to make its Forms 1023 (or 1024 if applicable), 990, and 990-T (501(c)(3)s only) available for public inspection. Indicate how you make these available. Check all that apply.  
 Own website     Another's website     Upon request
- 19 Describe in Schedule O whether (and if so, how) the organization makes its governing documents, conflict of interest policy, and financial statements available to the public. See Schedule O
- 20 State the name, physical address, and telephone number of the person who possesses the books and records of the organization:  
Bill Templeman, Exec Director 2910 Table Rock Rd, Medford, OR 97501-1518 541-779-3215

**Part VII Compensation of Officers, Directors, Trustees, Key Employees, Highest Compensated Employees, and Independent Contractors**

**Section A. Officers, Directors, Trustees, Key Employees, and Highest Compensated Employees**

1 a Complete this table for all persons required to be listed. Report compensation for the calendar year ending with or within the organization's tax year. Use Schedule J-2 if additional space is needed.

- List all of the organization's **current** officers, directors, trustees (whether individuals or organizations), regardless of amount of compensation. Enter -0- in columns (D), (E), and (F) if no compensation was paid.
- List all of the organization's **current** key employees. See instructions for definition of 'key employees.'
- List the organization's five **current** highest compensated employees (other than an officer, director, trustee, or key employee) who received reportable compensation (Box 5 of Form W-2 and/or Box 7 of Form 1099-MISC) of more than \$100,000 from the organization and any related organizations.
- List all of the organization's **former** officers, key employees, and highest compensated employees who received more than \$100,000 of reportable compensation from the organization and any related organizations.
- List all of the organization's **former directors or trustees** that received, in the capacity as a former director or trustee of the organization, more than \$10,000 of reportable compensation from the organization and any related organizations.

List persons in the following order: individual trustees or directors; institutional trustees; officers; key employees; highest compensated employees; and former such persons.

Check this box if the organization did not compensate any current officer, director, or trustee.

| (A)<br>Name and Title           | (B)<br>Average hours per week | (C)<br>Position (check all that apply) |                       |         |              |                              |        | (D)<br>Reportable compensation from the organization (W-2/1099-MISC) | (E)<br>Reportable compensation from related organizations (W-2/1099-MISC) | (F)<br>Estimated amount of other compensation from the organization and related organizations |
|---------------------------------|-------------------------------|--|-----------------------|---------|--------------|------------------------------|--------|--|---|---|
|                                 |                               | Individual trustee or director         | Institutional trustee | Officer | Key employee | Highest compensated employee | Former |  |   |   |
| Tamara Abbett<br>President      | 2                             | X                                      |                       | X       |              |                              |        | 0.   | 0.  | 0.  |
| James Maddux<br>Vice President  | 2                             | X                                      |                       | X       |              |                              |        | 0.   | 0.  | 0.  |
| Bill Steele<br>Treasurer        | 2                             | X                                      |                       | X       |              |                              |        | 0.   | 0.  | 0.  |
| Lisa Greif<br>Director          | 1                             | X                                      |                       |         |              |                              |        | 0.   | 0.  | 0.  |
| Mary Hanenburg<br>Director      | 1                             | X                                      |                       |         |              |                              |        | 0.   | 0.  | 0.  |
| Barbara Hurd<br>Director        | 1                             | X                                      |                       |         |              |                              |        | 0.   | 0.  | 0.  |
| Erik Larsen<br>Director         | 1                             | X                                      |                       |         |              |                              |        | 0.   | 0.  | 0.  |
| Lynn Mayers<br>Director         | 1                             | X                                      |                       |         |              |                              |        | 0.   | 0.  | 0.  |
| Rebecca Naumes<br>Director      | 1                             | X                                      |                       |         |              |                              |        | 0.   | 0.  | 0.  |
| Evelyn Wadsworth<br>Director    | 1                             | X                                      |                       |         |              |                              |        | 0.   | 0.  | 0.  |
| Pam Worthington<br>Director     | 1                             | X                                      |                       |         |              |                              |        | 0.   | 0.  | 0.  |
| Bill Templeman<br>Exec Director | 40                            |  |                       | X       |              |                              |        | 48,011.  | 0.  | 0.  |
|                                 |                               |  |                       |         |              |                              |        |  |   |   |
|                                 |                               |  |                       |         |              |                              |        |  |   |   |
|                                 |                               |  |                       |         |              |                              |        |  |   |   |
|                                 |                               |  |                       |         |              |                              |        |  |   |   |
|                                 |                               |  |                       |         |              |                              |        |  |   |   |
|                                 |                               |  |                       |         |              |                              |        |  |   |   |
|                                 |                               |  |                       |         |              |                              |        |  |   |   |
|                                 |                               |  |                       |         |              |                              |        |  |   |   |

COPY





**Part VIII Statement of Revenue**

|   |   |  | (A)<br>Total revenue | (B)<br>Related or<br>exempt<br>function<br>revenue | (C)<br>Unrelated<br>business<br>revenue | (D)<br>Revenue<br>excluded from tax<br>under sections<br>512, 513, or 514 |  |
|---|---|--|----------------------|--|---|---|--|
| <b>CONTRIBUTIONS, GIFTS, GRANTS<br/>AND OTHER SIMILAR AMOUNTS</b> | <b>1 a</b> Federated campaigns .....  | <b>1 a</b>   |                      |  |   |   |  |
|   | <b>b</b> Membership dues .....  | <b>1 b</b>   |                      |  |   |   |  |
|   | <b>c</b> Fundraising events .....   | <b>1 c</b>   | 10,180.              |  |   |   |  |
|   | <b>d</b> Related organizations .....  | <b>1 d</b>   |                      |  |   |   |  |
|   | <b>e</b> Government grants (contributions) .....  | <b>1 e</b>   |                      |  |   |   |  |
|   | <b>f</b> All other contributions, gifts, grants, and<br>similar amounts not included above .....  | <b>1 f</b>   | 517,297.             |  |   |   |  |
|   | <b>g</b> Noncash contribns included in lns 1a-1f: ... \$  |  | 13,296.              |  |   |   |  |
|   | <b>h Total.</b> Add lines 1a-1f .....   |  | 527,477.             |  |   |   |  |
| <b>PROGRAM SERVICE REVENUE</b>                                    | <b>2 a</b> <u>Animal adoption fees</u>  |  | <b>Business Code</b> |  |   |   |  |
|   |   | 900099   | 179,371.             | 179,371.   |   |   |  |
|   | <b>b</b> <u>Animal intake fees</u>  | 900099   | 9,499.               | 9,499.   |   |   |  |
|   | <b>c</b> <u>Pet license fees</u>  | 900099   | 766.                 | 766.   |   |   |  |
|   | <b>d</b> -----  |  |                      |  |   |   |  |
|   | <b>e</b> -----  |  |                      |  |   |   |  |
|   | <b>f</b> All other program service revenue .....  |  |                      |  |   |   |  |
|   | <b>g Total.</b> Add lines 2a-2f .....   |  | 189,636.             |  |   |   |  |
| <b>OTHER REVENUE</b>  | <b>3</b> Investment income (including dividends, interest and<br>other similar amounts) .....   |  | 1,432.               |  |   | 1,432.  |  |
|   | <b>4</b> Income from investment of tax-exempt bond proceeds .....   |  |                      |  |   |   |  |
|   | <b>5</b> Royalties .....  |  |                      |  |   |   |  |
|   | <b>6 a</b> Gross Rents .....  | (i) Real   | (ii) Personal        |  |   |   |  |
|   |   | <b>b</b> Less: rental expenses .....                           |                      |  |   |   |  |
|   |   | <b>c</b> Rental income or (loss) .....                         |                      |  |   |   |  |
|   |   | <b>d</b> Net rental income or (loss) .....                     |                      |  |   |   |  |
|   | <b>7 a</b> Gross amount from sales of<br>assets other than inventory .....  | (i) Securities   | (ii) Other           |  |   |   |  |
|   |   | -5,913.  | 1,880,000.           |  |   |   |  |
|   |   | <b>b</b> Less: cost or other basis<br>and sales expenses ..... |                      | 3,031,742.   |   |   |  |
|   |   | <b>c</b> Gain or (loss) .....                                  | -5,913.              | -1151742.  |   |   |  |
|   | <b>d</b> Net gain or (loss) .....   |  | -1,157,655.          | -1,151,742.  |   | -5,913.   |  |
|   | <b>8 a</b> Gross income from fundraising events<br>(not including \$ <u>10,180.</u><br>of contributions reported on line 1c).<br>See Part IV, line 18 ..... | <b>a</b>   | 78,916.              |  |   |   |  |
|   |   | <b>b</b> Less: direct expenses .....                           | <b>b</b>             | 9,684.   |   |   |  |
|   |   | <b>c</b> Net income or (loss) from fundraising events .....    |                      | 69,232.  | 69,232.                                 |   |  |
|   | <b>9 a</b> Gross income from gaming activities.<br>See Part IV, line 19 .....   | <b>a</b>   |                      |  |   |   |  |
|   |   | <b>b</b> Less: direct expenses .....                           | <b>b</b>             |  |   |   |  |
|   |   | <b>c</b> Net income or (loss) from gaming activities .....     |                      |  |   |   |  |
|   | <b>10 a</b> Gross sales of inventory, less returns<br>and allowances .....  | <b>a</b>   | 2,082.               |  |   |   |  |
|   |   | <b>b</b> Less: cost of goods sold .....                        | <b>b</b>             |  |   |   |  |
| <b>c</b> Net income or (loss) from sales of inventory .....       |   |  | 2,082.               | 2,082.   |   |   |  |
| <b>Miscellaneous Revenue</b>                                      |   | <b>Business Code</b>   |                      |  |   |   |  |
| <b>11 a</b> <u>Community programs</u>                             |   |  | 3,024.               | 3,024.   |   |   |  |
| <b>b</b> -----  |   |  |                      |  |   |   |  |
| <b>c</b> -----  |   |  |                      |  |   |   |  |
| <b>d</b> All other revenue .....                                  |   |  |                      |  |   |   |  |
| <b>e Total.</b> Add lines 11a-11d .....                           |   |  | 3,024.               |  |   |   |  |
| <b>12 Total revenue.</b> See instructions .....                   |   |  | -364,772.            | -887,768.  | 0.                                      | -4,481.   |  |



**Part IX Statement of Functional Expenses**

Section 501(c)(3) and 501(c)(4) organizations must complete all columns.

All other organizations must complete column (A) but are not required to complete columns (B), (C), and (D).

| <i>Do not include amounts reported on lines 6b, 7b, 8b, 9b, and 10b of Part VIII.</i>  | (A)<br>Total expenses | (B)<br>Program service expenses | (C)<br>Management and general expenses | (D)<br>Fundraising expenses |
|--|-----------------------|---------------------------------|--|-----------------------------|
| 1 Grants and other assistance to governments and organizations in the U.S. See Part IV, line 21  |                       |                                 |  |                             |
| 2 Grants and other assistance to individuals in the U.S. See Part IV, line 22  |                       |                                 |  |                             |
| 3 Grants and other assistance to governments, organizations, and individuals outside the U.S. See Part IV, lines 15 and 16   |                       |                                 |  |                             |
| 4 Benefits paid to or for members  |                       |                                 |  |                             |
| 5 Compensation of current officers, directors, trustees, and key employees   | 48,010.               | 19,204.                         | 9,602.                                 | 19,204.                     |
| 6 Compensation not included above, to disqualified persons (as defined under section 4958(f)(1) and persons described in section 4958(c)(3)(B))  | 0.                    | 0.                              | 0.                                     | 0.                          |
| 7 Other salaries and wages   | 363,682.              | 325,432.                        | 11,040.                                | 27,210.                     |
| 8 Pension plan contributions (include section 401(k) and section 403(b) employer contributions)  | 2,450.                | 1,813.                          | 147.                                   | 490.                        |
| 9 Other employee benefits  | 19,097.               | 14,132.                         | 1,146.                                 | 3,819.                      |
| 10 Payroll taxes   | 50,551.               | 39,935.                         | 3,539.                                 | 7,077.                      |
| 11 Fees for services (non-employees)   |                       |                                 |  |                             |
| a Management   |                       |                                 |  |                             |
| b Legal  |                       |                                 |  |                             |
| c Accounting   | 3,154.                |                                 | 3,154.                                 |                             |
| d Lobbying   |                       |                                 |  |                             |
| e Prof fundraising svcs. See Part IV, ln 17  |                       |                                 |  |                             |
| f Investment management fees   |                       |                                 |  |                             |
| g Other  |                       |                                 |  |                             |
| 12 Advertising and promotion   | 6,402.                | 5,762.                          |  | 640.                        |
| 13 Office expenses   | 45,992.               | 35,351.                         | 1,616.                                 | 9,025.                      |
| 14 Information technology  | 9,260.                | 3,704.                          | 3,704.                                 | 1,852.                      |
| 15 Royalties   |                       |                                 |  |                             |
| 16 Occupancy   | 65,611.               | 57,709.                         | 3,999.                                 | 3,903.                      |
| 17 Travel  | 4,663.                | 4,329.                          | 233.                                   | 101.                        |
| 18 Payments of travel or entertainment expenses for any federal, state, or local public officials  |                       |                                 |  |                             |
| 19 Conferences, conventions, and meetings  | 893.                  | 268.                            | 357.                                   | 268.                        |
| 20 Interest  | 31,610.               |                                 | 31,610.                                |                             |
| 21 Payments to affiliates  |                       |                                 |  |                             |
| 22 Depreciation, depletion, and amortization   | 22,186.               | 17,748.                         | 2,219.                                 | 2,219.                      |
| 23 Insurance   | 6,992.                | 5,368.                          | 525.                                   | 1,099.                      |
| 24 Other expenses. Itemize expenses not covered above. (Expenses grouped together and labeled miscellaneous may not exceed 5% of total expenses shown on line 25 below.)   |                       |                                 |  |                             |
| a <u>Animal and vet supplies</u>   | 107,965.              | 107,965.                        |  |                             |
| b <u>Bank and credit card fees</u>   | 13,689.               |                                 | 13,689.                                |                             |
| c <u>Other program expenses</u>  | 4,586.                | 4,586.                          |  |                             |
| d <u>Other expenses</u>  | 2,517.                | 2,391.                          | 126.                                   |                             |
| e <u>Dues and subscriptions</u>  | 1,438.                | 1,294.                          | 144.                                   |                             |
| f All other expenses   | 1,355.                | 1,257.                          | 98.                                    |                             |
| 25 Total functional expenses. Add lines 1 through 24f  | 812,103.              | 648,248.                        | 86,948.                                | 76,907.                     |
| 26 Joint costs. Check here <input type="checkbox"/> if following SOP 98-2. Complete this line only if the organization reported in column (B) joint costs from a combined educational campaign and fundraising solicitation. |                       |                                 |  |                             |

**Part X Balance Sheet**

|                             |   | (A)<br>Beginning of year   |              | (B)<br>End of year |              |
|-----------------------------|---|--|--------------|--------------------|--------------|
| ASSETS                      | 1   | Cash — non-interest-bearing  | 118,616.     | 1                  | 122,885.     |
|                             | 2   | Savings and temporary cash investments   |              | 2                  |              |
|                             | 3   | Pledges and grants receivable, net   | 209,677.     | 3                  | 1,397.       |
|                             | 4   | Accounts receivable, net   | 2,539.       | 4                  |              |
|                             | 5   | Receivables from current and former officers, directors, trustees, key employees, and highest compensated employees. Complete Part II of Schedule L                  |              | 5                  |              |
|                             | 6   | Receivables from other disqualified persons (as defined under section 4958(f)(1)) and persons described in section 4958(c)(3)(B). Complete Part II of Schedule L     |              | 6                  |              |
|                             | 7   | Notes and loans receivable, net  |              | 7                  |              |
|                             | 8   | Inventories for sale or use  | 2,114.       | 8                  | 9,138.       |
|                             | 9   | Prepaid expenses and deferred charges  | 15,411.      | 9                  | 13,436.      |
|                             | 10a   | Land, buildings, and equipment: cost or other basis. Complete Part VI of Schedule D  | 10a 349,775. |                    |              |
|                             | b   | Less: accumulated depreciation   | 10b 192,859. | 3,212,172.         | 10c 156,916. |
|                             | 11  | Investments — publicly-traded securities   | 6,636.       | 11                 |              |
|                             | 12  | Investments — other securities. See Part IV, line 11   |              | 12                 |              |
|                             | 13  | Investments — program-related. See Part IV, line 11  |              | 13                 |              |
|                             | 14  | Intangible assets  |              | 14                 |              |
|                             | 15  | Other assets. See Part IV, line 11   | 72,193.      | 15                 | 16,000.      |
| 16                          | <b>Total assets.</b> Add lines 1 through 15 (must equal line 34)  | 3,639,358.   | 16           | 319,772.           |              |
| LIABILITIES                 | 17  | Accounts payable and accrued expenses  | 48,169.      | 17                 | 35,451.      |
|                             | 18  | Grants payable   |              | 18                 |              |
|                             | 19  | Deferred revenue   | 1,900.       | 19                 | 1,497.       |
|                             | 20  | Tax-exempt bond liabilities  |              | 20                 |              |
|                             | 21  | Escrow or custodial account liability. Complete Part IV of Schedule D  |              | 21                 |              |
|                             | 22  | Payables to current and former officers, directors, trustees, key employees, highest compensated employees, and disqualified persons. Complete Part II of Schedule L |              | 22                 |              |
|                             | 23  | Secured mortgages and notes payable to unrelated third parties   | 2,281,600.   | 23                 | 401,600.     |
|                             | 24  | Unsecured notes and loans payable to unrelated third parties   |              | 24                 |              |
|                             | 25  | Other liabilities. Complete Part X of Schedule D   |              | 25                 |              |
|                             | 26  | <b>Total liabilities.</b> Add lines 17 through 25  | 2,331,669.   | 26                 | 438,548.     |
| NET ASSETS OR FUND BALANCES | <b>Organizations that follow SFAS 117, check here <input checked="" type="checkbox"/> and complete lines 27 through 29 and lines 33 and 34.</b> |  |              |                    |              |
|                             | 27  | Unrestricted net assets  | 1,113,568.   | 27                 | -134,776.    |
|                             | 28  | Temporarily restricted net assets  | 122,757.     | 28                 |              |
|                             | 29  | Permanently restricted net assets  | 71,364.      | 29                 | 16,000.      |
|                             | <b>Organizations that do not follow SFAS 117, check here <input type="checkbox"/> and complete lines 30 through 34.</b>                         |  |              |                    |              |
|                             | 30  | Capital stock or trust principal, or current funds   |              | 30                 |              |
|                             | 31  | Paid-in or capital surplus, or land, building, and equipment fund  |              | 31                 |              |
| 32                          | Retained earnings, endowment, accumulated income, or other funds  |  | 32           |                    |              |
| 33                          | Total net assets or fund balances   | 1,307,689.   | 33           | -118,776.          |              |
| 34                          | Total liabilities and net assets/fund balances  | 3,639,358.   | 34           | 319,772.           |              |

**Part XI Financial Statements and Reporting**

|           |   | Yes | No |
|-----------|---|-----|----|
| <b>1</b>  | Accounting method used to prepare the Form 990: <input type="checkbox"/> Cash <input checked="" type="checkbox"/> Accrual <input type="checkbox"/> Other<br>If the organization changed its method of accounting from a prior year or checked 'Other,' explain in Schedule O. |     |    |
| <b>2a</b> | Were the organization's financial statements compiled or reviewed by an independent accountant? .....   | X   |    |
| <b>2b</b> | Were the organization's financial statements audited by an independent accountant? .....  |     | X  |
| <b>2c</b> | If 'Yes' to line 2a or 2b, does the organization have a committee that assumes responsibility for oversight of the audit, review, or compilation of its financial statements and selection of an independent accountant? .....  | X   |    |
|           | If the organization changed either its oversight process or selection process during the tax year, explain in Schedule O.   |     |    |
| <b>d</b>  | If 'Yes' to line 2a or 2b, check a box below to indicate whether the financial statements for the year were issued on a consolidated basis, separate basis, or both: .....  |     |    |
|           | <input checked="" type="checkbox"/> Separate basis <input type="checkbox"/> Consolidated basis <input type="checkbox"/> Both consolidated and separate basis  |     |    |
| <b>3a</b> | As a result of a federal award, was the organization required to undergo an audit or audits as set forth in the Single Audit Act and OMB Circular A-133? .....  |     | X  |
| <b>3b</b> | If 'Yes,' did the organization undergo the required audit or audits? If the organization did not undergo the required audit or audits, explain why in Schedule O and describe any steps taken to undergo such audits. ....  |     |    |

BAA

Form 990 (2009)

**SCHEDULE A**  
**(Form 990 or 990-EZ)**

Department of the Treasury  
Internal Revenue Service

**Public Charity Status and Public Support**

**Complete if the organization is a section 501(c)(3) organization or a section 4947(a)(1) nonexempt charitable trust.**

▶ **Attach to Form 990 or Form 990-EZ.** ▶ **See separate instructions.**

OMB No. 1545-0047

**2009**

**Open to Public Inspection**

|   |   |
|---|---|
| Name of the organization<br><b>SOUTHERN OREGON HUMANE SOCIETY</b> | Employer identification number<br><b>93-0391640</b> |
|---|---|

**Part I Reason for Public Charity Status** (All organizations must complete this part.) See instructions

The organization is not a private foundation because it is: (For lines 1 through 11, check only one box.)

- 1  A church, convention of churches or association of churches described in **section 170(b)(1)(A)(i)**.
- 2  A school described in **section 170(b)(1)(A)(ii)**. (Attach Schedule E.)
- 3  A hospital or cooperative hospital service organization described in **section 170(b)(1)(A)(iii)**.
- 4  A medical research organization operated in conjunction with a hospital described in **section 170(b)(1)(A)(iii)**. Enter the hospital's name, city, and state: \_\_\_\_\_
- 5  An organization operated for the benefit of a college or university owned or operated by a governmental unit described in **section 170(b)(1)(A)(iv)**. (Complete Part II.)
- 6  A federal, state, or local government or governmental unit described in **section 170(b)(1)(A)(v)**.
- 7  An organization that normally receives a substantial part of its support from a governmental unit or from the general public described in **section 170(b)(1)(A)(vi)**. (Complete Part II.)
- 8  A community trust described in **section 170(b)(1)(A)(vi)**. (Complete Part II.)
- 9  An organization that normally receives: (1) more than 33-1/3 % of its support from contributions, membership fees, and gross receipts from activities related to its exempt functions – subject to certain exceptions, and (2) no more than 33-1/3 % of its support from gross investment income and unrelated business taxable income (less section 511 tax) from businesses acquired by the organization after June 30, 1975. See **section 509(a)(2)**. (Complete Part III.)
- 10  An organization organized and operated exclusively to test for public safety. See **section 509(a)(4)**.
- 11  An organization organized and operated exclusively for the benefit of, to perform the functions of, or carry out the purposes of one or more publicly supported organizations described in section 509(a)(1) or section 509(a)(2). See **section 509(a)(3)**. Check the box that describes the type of supporting organization and complete lines 11e through 11h.
  - a  Type I
  - b  Type II
  - c  Type III – Functionally integrated
  - d  Type III – Other
- e  By checking this box, I certify that the organization is not controlled directly or indirectly by one or more disqualified persons other than foundation managers and other than one or more publicly supported organizations described in section 509(a)(1) or section 509(a)(2).
- f If the organization received a written determination from the IRS that is a Type I, Type II or Type III supporting organization, check this box.
- g Since August 17, 2006, has the organization accepted any gift or contribution from any of the following persons?

|   | Yes        | No |
|---|------------|----|
| <b>(i)</b> a person who directly or indirectly controls, either alone or together with persons described in (ii) and (iii) below, the governing body of the supported organization? ..... | 11 g (i)   |    |
| <b>(ii)</b> a family member of a person described in (i) above? .....   | 11 g (ii)  |    |
| <b>(iii)</b> a 35% controlled entity of a person described in (i) or (ii) above? .....  | 11 g (iii) |    |

**h** Provide the following information about the supported organizations.

| (i) Name of Supported Organization | (ii) EIN | (iii) Type of organization (described on lines 1-9 above or IRC section (see instructions)) | (iv) Is the organization in col. (i) listed in your governing document? |    | (v) Did you notify the organization in col. (i) of your support? |    | (vi) Is the organization in col. (i) organized in the U.S.? |    | (vii) Amount of Support |
|------------------------------------|----------|---|---|----|--|----|---|----|-------------------------|
|                                    |          |   | Yes   | No | Yes  | No | Yes   | No |                         |
|                                    |          |   |   |    |  |    |   |    |                         |
|                                    |          |   |   |    |  |    |   |    |                         |
|                                    |          |   |   |    |  |    |   |    |                         |
|                                    |          |   |   |    |  |    |   |    |                         |
|                                    |          |   |   |    |  |    |   |    |                         |
|                                    |          |   |   |    |  |    |   |    |                         |
|                                    |          |   |   |    |  |    |   |    |                         |
|                                    |          |   |   |    |  |    |   |    |                         |
| <b>Total</b>                       |          |   |   |    |  |    |   |    |                         |

**Part II Support Schedule for Organizations Described in Sections 170(b)(1)(A)(iv) and 170(b)(1)(A)(vi)**

(Complete only if you checked the box on line 5, 7, or 8 of Part I.)

**Section A. Public Support**

| Calendar year (or fiscal year beginning in) ▶  | (a) 2005 | (b) 2006 | (c) 2007 | (d) 2008 | (e) 2009 | (f) Total |
|--|----------|----------|----------|----------|----------|-----------|
| 1 Gifts, grants, contributions and membership fees received. (Do not include 'unusual grants.')...   |          |          |          |          |          |           |
| 2 Tax revenues levied for the organization's benefit and either paid to it or expended on its behalf. ....   |          |          |          |          |          |           |
| 3 The value of services or facilities furnished to the organization by a governmental unit without charge. Do not include the value of services or facilities generally furnished to the public without charge. .... |          |          |          |          |          |           |
| 4 <b>Total.</b> Add lines 1-through 3. ...   |          |          |          |          |          |           |
| 5 The portion of total contributions by each person (other than a governmental unit or publicly supported organization) included on line 1 that exceeds 2% of the amount shown on line 11, column (f) ...            |          |          |          |          |          |           |
| 6 <b>Public support.</b> Subtract line 5 from line 4. ....   |          |          |          |          |          |           |

**Section B. Total Support**

| Calendar year (or fiscal year beginning in) ▶  | (a) 2005 | (b) 2006 | (c) 2007 | (d) 2008 | (e) 2009 | (f) Total |
|--|----------|----------|----------|----------|----------|-----------|
| 7 Amounts from line 4. ....  |          |          |          |          |          |           |
| 8 Gross income from interest, dividends, payments received on securities loans, rents, royalties and income from similar sources. ....   |          |          |          |          |          |           |
| 9 Net income from unrelated business activities, whether or not the business is regularly carried on. ....   |          |          |          |          |          |           |
| 10 Other income. Do not include gain or loss from the sale of capital assets (Explain in Part IV.) ....  |          |          |          |          |          |           |
| 11 <b>Total support.</b> Add lines 7 through 10. ....  |          |          |          |          |          |           |
| 12 Gross receipts from related activities, etc. (see instructions) .....   |          |          |          |          | 12       |           |
| 13 <b>First five years.</b> If the Form 990 is for the organization's first, second, third, fourth, or fifth tax year as a section 501(c)(3) organization, check this box and stop here. .... ▶ <input type="checkbox"/> |          |          |          |          |          |           |

**Section C. Computation of Public Support Percentage**

|   |    |   |
|---|----|---|
| 14 Public support percentage for 2009 (line 6, column (f) divided by line 11, column (f)) .....   | 14 | % |
| 15 Public support percentage from 2008 Schedule A, Part II, line 14. ....   | 15 | % |
| 16a <b>33-1/3 support test – 2009.</b> If the organization did not check the box on line 13, and the line 14 is 33-1/3 % or more, check this box and <b>stop here.</b> The organization qualifies as a publicly supported organization. .... ▶ <input type="checkbox"/>   |    |   |
| <b>b 33-1/3 support test – 2008.</b> If the organization did not check a box on line 13, or 16a, and line 15 is 33-1/3% or more, check this box and <b>stop here.</b> The organization qualifies as a publicly supported organization. .... ▶ <input type="checkbox"/>  |    |   |
| 17a <b>10%-facts-and-circumstances test – 2009</b> If the organization did not check a box on line 13, 16a, or 16b, and line 14 is 10% or more, and if the organization meets the 'facts-and-circumstances' test, check this box and <b>stop here.</b> Explain in Part IV how the organization meets the 'facts-and-circumstances' test. The organization qualifies as a publicly supported organization. .... ▶ <input type="checkbox"/>     |    |   |
| <b>b 10%-facts-and-circumstances test – 2008.</b> If the organization did not check a box on line 13, 16a, 16b, or 17a, and line 15 is 10% or more, and if the organization meets the 'facts-and-circumstances' test, check this box and <b>stop here.</b> Explain in Part IV how the organization meets the 'facts-and-circumstances' test. The organization qualifies as a publicly supported organization. .... ▶ <input type="checkbox"/> |    |   |
| 18 <b>Private foundation.</b> If the organization did not check a box on line 13, 16a, 16b, 17a, or 17b, check this box and see instructions. .... ▶ <input type="checkbox"/>   |    |   |

**Part III Support Schedule for Organizations Described in Section 509(a)(2)**

(Complete only if you checked the box on line 9 of Part I.)

**Section A. Public Support**

| Calendar year (or fiscal yr beginning in) ▶  | (a) 2005 | (b) 2006 | (c) 2007 | (d) 2008 | (e) 2009 | (f) Total  |
|--|----------|----------|----------|----------|----------|------------|
| <b>1</b> Gifts, grants, contributions and membership fees received. (Do not include "unusual grants.")   | 552,531. | 473,692. | 562,500. | 484,203. | 599,720. | 2,672,646. |
| <b>2</b> Gross receipts from admissions, merchandise sold or services performed, or facilities furnished in a activity that is related to the organization's tax-exempt purpose. | 80,928.  | 102,724. | 137,917. | 160,668. | 191,718. | 673,955.   |
| <b>3</b> Gross receipts from activities that are not an unrelated trade or business under section 513.   |          |          |          |          |          | 0.         |
| <b>4</b> Tax revenues levied for the organization's benefit and either paid to or expended on its behalf.  |          |          |          |          |          | 0.         |
| <b>5</b> The value of services or facilities furnished by a governmental unit to the organization without charge.  |          |          |          |          |          | 0.         |
| <b>6 Total.</b> Add lines 1 through 5.   | 633,459. | 576,416. | 700,417. | 644,871. | 791,438. | 3,346,601. |
| <b>7a</b> Amounts included on lines 1, 2, 3 received from disqualified persons.  | 0.       | 0.       | 0.       | 0.       | 0.       | 0.         |
| <b>b</b> Amounts included on lines 2 and 3 received from other than disqualified persons that exceed the greater of 1% of the amount on line 13 for the year.                    | 0.       | 0.       | 0.       | 0.       | 0.       | 0.         |
| <b>c</b> Add lines 7a and 7b.  | 0.       | 0.       | 0.       | 0.       | 0.       | 0.         |
| <b>8 Public support</b> (Subtract line 7c from line 6.)  |          |          |          |          |          | 3,346,601. |

**Section B. Total Support**

| Calendar year (or fiscal yr beginning in) ▶  | (a) 2005 | (b) 2006 | (c) 2007 | (d) 2008 | (e) 2009 | (f) Total  |
|--|----------|----------|----------|----------|----------|------------|
| <b>9</b> Amounts from line 6.  | 633,459. | 576,416. | 700,417. | 644,871. | 791,438. | 3,346,601. |
| <b>10a</b> Gross income from interest, dividends, payments received on securities loans, rents, royalties and income from similar sources. | 17,812.  | 25,555.  | 23,892.  | 5,279.   | 1,432.   | 73,970.    |
| <b>b</b> Unrelated business taxable income (less section 511 taxes) from businesses acquired after June 30, 1975.                          |          |          |          |          |          | 0.         |
| <b>c</b> Add lines 10a and 10b.  | 17,812.  | 25,555.  | 23,892.  | 5,279.   | 1,432.   | 73,970.    |
| <b>11</b> Net income from unrelated business activities not included in line 10b, whether or not the business is regularly carried on.     |          |          |          |          |          | 0.         |
| <b>12</b> Other income. Do not include gain or loss from the sale of capital assets (Explain in Part IV.)                                  |          |          |          |          |          | 0.         |
| <b>13 Total support.</b> (add lns 9, 10c, 11, and 12.)   |          |          |          |          |          | 3,420,571. |

**14 First five years.** If the Form 990 is for the organization's first, second, third, fourth, or fifth tax year as a section 501(c)(3) organization, check this box and stop here

**Section C. Computation of Public Support Percentage**

|   |           |        |
|---|-----------|--------|
| <b>15</b> Public support percentage for 2009 (line 8, column (f) divided by line 13, column (f)). | <b>15</b> | 97.8 % |
| <b>16</b> Public support percentage from 2008 Schedule A, Part III, line 15.                      | <b>16</b> | 97.5 % |

**Section D. Computation of Investment Income Percentage**

|  |           |       |
|--|-----------|-------|
| <b>17</b> Investment income percentage for 2009 (line 10c, column (f) divided by line 13, column (f)). | <b>17</b> | 2.2 % |
| <b>18</b> Investment income percentage from 2008 Schedule A, Part III, line 17.                        | <b>18</b> | 2.5 % |

**19a 33-1/3 support tests – 2009.** If the organization did not check the box on line 14, and line 15 is more than 33-1/3%, and line 17 is not more than 33-1/3%, check this box and **stop here.** The organization qualifies as a publicly supported organization.

**b 33-1/3 support tests – 2008.** If the organization did not check a box on line 14 or 19a, and line 16 is more than 33-1/3%, and line 18 is not more than 33-1/3%, check this box and **stop here.** The organization qualifies as a publicly supported organization.

**20 Private foundation.** If the organization did not check a box on line 14, 19a, or 19b, check this box and see instructions.

**Part IV** **Supplemental Information.** Complete this part to provide the explanations required by Part II, line 10; Part II, line 17a or 17b; and Part III, line 12. Provide any other additional information. See instructions.

COPY



Schedule B  
(Form 990, 990-EZ,  
or 990-PF)

Department of the Treasury  
Internal Revenue Service

Schedule of Contributors

▶ Attach to Form 990, 990-EZ, or 990-PF

OMB No. 1545-0047

2009

Name of the organization

SOUTHERN OREGON HUMANE SOCIETY

Employer identification number

93-0391640

Organization type (check one):

Filers of:

Form 990 or 990-EZ

Section:

501(c)( 3 ) (enter number) organization

4947(a)(1) nonexempt charitable trust **not** treated as a private foundation

527 political organization

Form 990-PF

501(c)(3) exempt private foundation

4947(a)(1) nonexempt charitable trust treated as a private foundation

501(c)(3) taxable private foundation

Check if your organization is covered by the **General Rule** or a **Special Rule**.

**Note:** Only a section 501(c)(7), (8), or (10) organization can check boxes for both the General Rule and a Special Rule. See instructions.

General Rule –

For an organization filing Form 990, 990-EZ, or 990-PF that received, during the year, \$5,000 or more (in money or property) from any one contributor. (Complete Parts I and II.)

Special Rules –

For a section 501(c)(3) organization filing Form 990 or 990-EZ, that met the 33-1/3% support test of the regulations under sections 509(a)(1)/170(b)(1)(A)(vi) and received from any one contributor, during the year, a contribution of the greater of (1) \$5,000 or (2) 2% of the amount on (i) Form 990, Part VIII, line 1h or (ii) Form 990-EZ, line 1. Complete Parts I and II.

For a section 501(c)(7), (8), or (10) organization filing Form 990 or 990-EZ, that received from any one contributor, during the year, aggregate contributions of more than \$1,000 for use *exclusively* for religious, charitable, scientific, literary, or educational purposes, or the prevention of cruelty to children or animals. Complete Parts I, II, and III.

For a section 501(c)(7), (8), or (10) organization filing Form 990 or 990-EZ, that received from any one contributor, during the year, contributions for use *exclusively* for religious, charitable, etc, purposes, but these contributions did not aggregate to more than \$1,000. If this box is checked, enter here the total contributions that were received during the year for an *exclusively* religious, charitable, etc, purpose. Do not complete any of the parts unless the **General Rule** applies to this organization because it received nonexclusively religious, charitable, etc, contributions of \$5,000 or more during the year..... ▶ \$ \_\_\_\_\_

**Caution:** An organization that is not covered by the General Rule and/or the Special Rules does not file Schedule B (Form 990, 990-EZ, or 990-PF) but it **must** answer 'No' on Part IV, line 2 of their Form 990, or check the box on line H of its Form 990-EZ, or on line 2 of its Form 990-PF, to certify that it does not meet the filing requirements of Schedule B (Form 990, 990-EZ, or 990-PF).

**BAA For Privacy Act and Paperwork Reduction Act Notice, see the Instructions for Form 990, 990EZ, or 990-PF.**

**Schedule B** (Form 990, 990-EZ, or 990-PF) (2009)

Name of organization

Employer identification number

SOUTHERN OREGON HUMANE SOCIETY

93-0391640

**Part I** Contributors (see instructions.)

| (a)<br>Number | (b)<br>Name, address, and ZIP + 4   | (c)<br>Aggregate<br>contributions | (d)<br>Type of contribution  |
|---------------|---|-----------------------------------|--|
| 1             | Verne Beebe Estate<br>P O Box 155<br>Jacksonville, OR 97530-0155              | \$ 49,881.                        | Person <input checked="" type="checkbox"/><br>Payroll <input type="checkbox"/><br>Noncash <input type="checkbox"/><br>(Complete Part II if there is a noncash contribution.) |
| 2             | Brian McKennon<br>P O Box 1767<br>Jacksonville, OR 97530-1767                 | \$ 5,000.                         | Person <input checked="" type="checkbox"/><br>Payroll <input type="checkbox"/><br>Noncash <input type="checkbox"/><br>(Complete Part II if there is a noncash contribution.) |
| 3             | Mary and Tom Hanenburg<br>500 Morton Way<br>Jacksonville, OR 97530-9802       | \$ 5,150.                         | Person <input checked="" type="checkbox"/><br>Payroll <input type="checkbox"/><br>Noncash <input type="checkbox"/><br>(Complete Part II if there is a noncash contribution.) |
| 4             | M.L.A. Scott Trust c/o SOHS<br>2910 Table Rock Road<br>Medford, OR 97501-1518 | \$ 66,000.                        | Person <input checked="" type="checkbox"/><br>Payroll <input type="checkbox"/><br>Noncash <input type="checkbox"/><br>(Complete Part II if there is a noncash contribution.) |
| 5             | Tamara Abbett<br>294 Starflower Lane<br>Ashland, OR 97520-1292                | \$ 25,085.                        | Person <input checked="" type="checkbox"/><br>Payroll <input type="checkbox"/><br>Noncash <input type="checkbox"/><br>(Complete Part II if there is a noncash contribution.) |
| 6             | Barbara Evans O'Donnell<br>175 Brooks Lane<br>Ashland, OR 97520-9560          | \$ 5,500.                         | Person <input type="checkbox"/><br>Payroll <input type="checkbox"/><br>Noncash <input checked="" type="checkbox"/><br>(Complete Part II if there is a noncash contribution.) |

Name of organization

Employer identification number

SOUTHERN OREGON HUMANE SOCIETY

93-0391640

**Part I** Contributors (see instructions.)

| (a)<br>Number | (b)<br>Name, address, and ZIP + 4   | (c)<br>Aggregate contributions | (d)<br>Type of contribution  |
|---------------|---|--------------------------------|--|
| 7             | Jarmila Fejgl Estate<br>3 Crestwind Drive<br>Rancho Palos Verdes, CA 90275-5048 | \$ 10,000.                     | Person <input checked="" type="checkbox"/><br>Payroll <input type="checkbox"/><br>Noncash <input type="checkbox"/><br>(Complete Part II if there is a noncash contribution.) |
| 8             | Estate of Diane Christopher<br>610 Crater Lake Avenue<br>Medford, OR 97504-6523 | \$ 22,350.                     | Person <input checked="" type="checkbox"/><br>Payroll <input type="checkbox"/><br>Noncash <input type="checkbox"/><br>(Complete Part II if there is a noncash contribution.) |
| ---           | -----<br>-----<br>-----   | \$ -----                       | Person <input type="checkbox"/><br>Payroll <input type="checkbox"/><br>Noncash <input type="checkbox"/><br>(Complete Part II if there is a noncash contribution.)            |
| ---           | -----<br>-----<br>-----   | \$ -----                       | Person <input type="checkbox"/><br>Payroll <input type="checkbox"/><br>Noncash <input type="checkbox"/><br>(Complete Part II if there is a noncash contribution.)            |
| ---           | -----<br>-----<br>-----   | \$ -----                       | Person <input type="checkbox"/><br>Payroll <input type="checkbox"/><br>Noncash <input type="checkbox"/><br>(Complete Part II if there is a noncash contribution.)            |
| ---           | -----<br>-----<br>-----   | \$ -----                       | Person <input type="checkbox"/><br>Payroll <input type="checkbox"/><br>Noncash <input type="checkbox"/><br>(Complete Part II if there is a noncash contribution.)            |

COPY

Name of organization

SOUTHERN OREGON HUMANE SOCIETY

Employer identification number

93-0391640

**Part II** Noncash Property (see instructions.)

| (a)<br>No. from<br>Part I | (b)<br>Description of noncash property given | (c)<br>FMV (or estimate)<br>(see instructions) | (d)<br>Date received |
|---------------------------|--|--|----------------------|
| 6                         | 66 shares of Air Products & Chemicals, Inc.  | \$ 5,500.                                      | 12/15/09             |
| _____                     | _____  | _____  | _____                |
| _____                     | _____  | _____  | _____                |
| _____                     | _____  | _____  | _____                |
| _____                     | _____  | _____  | _____                |
| _____                     | _____  | _____  | _____                |
| _____                     | _____  | _____  | _____                |
| _____                     | _____  | _____  | _____                |
| _____                     | _____  | _____  | _____                |
| _____                     | _____  | _____  | _____                |
| _____                     | _____  | _____  | _____                |
| _____                     | _____  | _____  | _____                |
| _____                     | _____  | _____  | _____                |
| _____                     | _____  | _____  | _____                |
| _____                     | _____  | _____  | _____                |

COPY

|   |   |
|---|---|
| Name of organization<br><b>SOUTHERN OREGON HUMANE SOCIETY</b> | Employer identification number<br><b>93-0391640</b> |
|---|---|

**Part III Exclusively religious, charitable, etc, individual contributions to section 501(c)(7), (8), or (10) organizations aggregating more than \$1,000 for the year.** (Complete cols (a) through (e) and the following line entry.)

For organizations completing Part III, enter total of *exclusively* religious, charitable, etc, contributions of **\$1,000 or less** for the year. (Enter this information once – see instructions.) ..... \$ N/A

| (a)<br>No. from Part I | (b)<br>Purpose of gift | (c)<br>Use of gift | (d)<br>Description of how gift is held |
|------------------------|------------------------|--------------------|--|
|                        | N/A                    |                    |  |
|                        |                        |                    |  |
|                        |                        |                    |  |

| (e)<br>Transfer of gift                 |  |
|---|--|
| Transferee's name, address, and ZIP + 4 | Relationship of transferor to transferee |
|   |  |
|   |  |
|   |  |

| (a)<br>No. from Part I | (b)<br>Purpose of gift | (c)<br>Use of gift | (d)<br>Description of how gift is held |
|------------------------|------------------------|--------------------|--|
|                        |                        |                    |  |
|                        |                        |                    |  |
|                        |                        |                    |  |

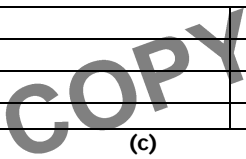
| (e)<br>Transfer of gift                 |  |
|---|--|
| Transferee's name, address, and ZIP + 4 | Relationship of transferor to transferee |
|   |  |
|   |  |
|   |  |

| (a)<br>No. from Part I | (b)<br>Purpose of gift | (c)<br>Use of gift | (d)<br>Description of how gift is held |
|------------------------|------------------------|--------------------|--|
|                        |                        |                    |  |
|                        |                        |                    |  |
|                        |                        |                    |  |

| (e)<br>Transfer of gift                 |  |
|---|--|
| Transferee's name, address, and ZIP + 4 | Relationship of transferor to transferee |
|   |  |
|   |  |
|   |  |

| (a)<br>No. from Part I | (b)<br>Purpose of gift | (c)<br>Use of gift | (d)<br>Description of how gift is held |
|------------------------|------------------------|--------------------|--|
|                        |                        |                    |  |
|                        |                        |                    |  |
|                        |                        |                    |  |

| (e)<br>Transfer of gift                 |  |
|---|--|
| Transferee's name, address, and ZIP + 4 | Relationship of transferor to transferee |
|   |  |
|   |  |
|   |  |



SCHEDULE D (Form 990)

Department of the Treasury Internal Revenue Service

Supplemental Financial Statements

Complete if the organization answered 'Yes,' to Form 990, Part IV, lines 6, 7, 8, 9, 10, 11, or 12. Attach to Form 990. See separate instructions

OMB No. 1545-0047

2009

Open to Public Inspection

Name of the organization

SOUTHERN OREGON HUMANE SOCIETY

Employer identification number

93-0391640

Part I Organizations Maintaining Donor Advised Funds or Other Similar Funds or Accounts Complete if the organization answered 'Yes' to Form 990, Part IV, line 6.

Table with 3 columns: Question, (a) Donor advised funds, (b) Funds and other accounts. Includes questions 1-6 regarding donor advised funds.

Part II Conservation Easements Complete if the organization answered 'Yes' to Form 990, Part IV, line 7.

Table with 2 columns: Question, Held at the End of the Year. Includes questions 1-9 regarding conservation easements.

Part III Organizations Maintaining Collections of Art, Historical Treasures, or Other Similar Assets Complete if the organization answered 'Yes' to Form 990, Part IV, line 8.

Table with 2 columns: Question, Amount. Includes questions 1a-1b and 2a-2b regarding art and historical treasures.

**Part III Organizations Maintaining Collections of Art, Historical Treasures, or Other Similar Assets** (continued)

3 Using the organization's acquisition accession and other records, check any of the following that are a significant use of its collection items (check all that apply):

- a  Public exhibition
- b  Scholarly research
- c  Preservation for future generations
- d  Loan or exchange programs
- e  Other \_\_\_\_\_

4 Provide a description of the organization's collections and explain how they further the organization's exempt purpose in Part XIV.

5 During the year, did the organization solicit or receive donations of art, historical treasures, or other similar assets to be sold to raise funds rather than to be maintained as part of the organization's collection?  Yes  No

**Part IV Escrow and Custodial Arrangements** Complete if organization answered 'Yes' to Form 990, Part IV, line 9, or reported an amount on Form 990, Part X, line 21.

1a Is the organization an agent, trustee, custodian, or other intermediary for contributions or other assets not included on Form 990, Part X?  Yes  No

b If 'Yes,' explain the arrangement in Part XIV and complete the following table:

|                                 | Amount |
|---------------------------------|--------|
| c Beginning balance             | 1c     |
| d Additions during the year     | 1d     |
| e Distributions during the year | 1e     |
| f Ending balance                | 1f     |

2a Did the organization include an amount on Form 990, Part X, line 21?  Yes  No

b If 'Yes,' explain the arrangement in Part XIV.

**Part V Endowment Funds** Complete if organization answered 'Yes' to Form 990, Part IV, line 10.

|  | (a) Current year | (b) Prior year | (c) Two years back | (d) Three years back | (e) Four years back |
|--|------------------|----------------|--------------------|----------------------|---------------------|
| 1a Beginning of year balance                     | 56,193.          | 78,726.        |                    |                      |                     |
| b Contributions                                  |                  |                |                    |                      |                     |
| c Net Investment earnings, gains, and losses     | 10,156.          | -22,164.       |                    |                      |                     |
| d Grants or scholarships                         | 65,898.          |                |                    |                      |                     |
| e Other expenditures for facilities and programs |                  |                |                    |                      |                     |
| f Administrative expenses                        | 451.             | 369.           |                    |                      |                     |
| g End of year balance                            | 0.               | 56,193.        |                    |                      |                     |

2 Provide the estimated percentage of the year end balance held as:

- a Board designated or quasi-endowment \_\_\_\_\_ %
- b Permanent endowment \_\_\_\_\_ %
- c Term endowment \_\_\_\_\_ %

3a Are there endowment funds not in the possession of the organization that are held and administered for the organization by:

|   | Yes | No |
|---|-----|----|
| (i) unrelated organizations   |     | X  |
| (ii) related organizations  |     | X  |
| b If 'Yes' to 3a(ii), are the related organizations listed as required on Schedule R? |     |    |

4 Describe in Part XIV the intended uses of the organization's endowment funds.

**Part VI Investments—Land, Buildings, and Equipment.** See Form 990, Part X, line 10.

| Description of investment | (a) Cost or other basis (investment) | (b) Cost or other basis (other) | (c) Accumulated Depreciation | (d) Book Value |
|---------------------------|--------------------------------------|---------------------------------|------------------------------|----------------|
| 1a Land                   |                                      | 28,500.                         |                              | 28,500.        |
| b Buildings               |                                      | 158,975.                        | 57,179.                      | 101,796.       |
| c Leasehold improvements  |                                      |                                 |                              |                |
| d Equipment               |                                      | 162,300.                        | 135,680.                     | 26,620.        |
| e Other                   |                                      |                                 |                              |                |

**Total.** Add lines 1a through 1e (Column (d) must equal Form 990, Part X, column (B), line 10(c).)  156,916.

BAA





| <b>Part XI Reconciliation of Change in Net Assets from Form 990 to Financial Statements</b> |  | N/A |
|---|--|-----|
| 1   | Total revenue (Form 990, Part VIII, column (A), line 12)                                 |     |
| 2   | Total expenses (Form 990, Part IX, column (A), line 25)                                  |     |
| 3   | Excess or (deficit) for the year. Subtract line 2 from line 1                            |     |
| 4   | Net unrealized gains (losses) on investments   |     |
| 5   | Donated services and use of facilities   |     |
| 6   | Investment expenses  |     |
| 7   | Prior period adjustments   |     |
| 8   | Other (Describe in Part XIV)   |     |
| 9   | Total adjustments (net). Add lines 4 through 8   |     |
| 10  | Excess or (deficit) for the year per audited financial statements. Combine lines 3 and 9 |     |

| <b>Part XII Reconciliation of Revenue per Audited Financial Statements With Revenue per Return</b> |   | N/A |
|--|---|-----|
| 1  | Total revenue, gains, and other support per audited financial statements        | 1   |
| 2  | Amounts included on line 1 but not on Form 990, Part VIII, line 12:             |     |
| a  | Net unrealized gains on investments   | 2a  |
| b  | Donated services and use of facilities  | 2b  |
| c  | Recoveries of prior year grants   | 2c  |
| d  | Other (Describe in Part XIV)  | 2d  |
| e  | Add lines 2a through 2d   | 2e  |
| 3  | Subtract line 2e from line 1  | 3   |
| 4  | Amounts included on Form 990, Part VIII, line 12, but not on line 1:            |     |
| a  | Investments expenses not included on Form 990, Part VIII, line 7b               | 4a  |
| b  | Other (Describe in Part XIV)  | 4b  |
| c  | Add lines 4a and 4b   | 4c  |
| 5  | Total revenue. Add lines 3 and 4c. (This must equal Form 990, Part I, line 12.) | 5   |

| <b>Part XIII Reconciliation of Expenses per Audited Financial Statements With Expenses per Return</b> |  | N/A |
|---|--|-----|
| 1   | Total expenses and losses per audited financial statements                       | 1   |
| 2   | Amounts included on line 1 but not on Form 990, Part IX, line 25:                |     |
| a   | Donated services and use of facilities   | 2a  |
| b   | Prior year adjustments   | 2b  |
| c   | Other losses   | 2c  |
| d   | Other (Describe in Part XIV)   | 2d  |
| e   | Add lines 2a through 2d  | 2e  |
| 3   | Subtract line 2e from line 1   | 3   |
| 4   | Amounts included on Form 990, Part IX, line 25, but not on line 1:               |     |
| a   | Investments expenses not included on Form 990, Part VIII, line 7b                | 4a  |
| b   | Other (Describe in Part XIV)   | 4b  |
| c   | Add lines 4a and 4b  | 4c  |
| 5   | Total expenses. Add lines 3 and 4c. (This must equal Form 990, Part I, line 18.) | 5   |

**Part XIV Supplemental Information**

Complete this part to provide the descriptions required for Part II, lines 3, 5, and 9; Part III, lines 1a and 4; Part IV, lines 1b and 2b; Part V, line 4; Part X, line 2; Part XI, line 8; Part XII, lines 2d and 4b; and Part XIII, lines 2d and 4b. Also complete this part to provide any additional information.

-----

-----

-----

-----

-----

-----

-----

-----

-----

-----

-----

**Part XIV** Supplemental Information *(continued)*

COPY



**Part II Fundraising Events.** Complete if the organization answered 'Yes' to Form 990, Part IV, line 18, or reported more than \$15,000 on Form 990-EZ, line 6a. List events with gross receipts greater than \$5,000.

| REVENUE         | (a) Event #1   | (b) Event #2                   | (c) Other Events    | (d) Total Events                |         |
|-----------------|--|--------------------------------|---------------------|---------------------------------|---------|
|                 | Auction<br>(event type)                                      | Associates Pgm<br>(event type) | 1<br>(total number) | (Add col. (a) through col. (c)) |         |
| 1               | Gross receipts   | 71,587.                        | 10,180.             | 7,329.                          | 89,096. |
| 2               | Less: Charitable contributions                               |                                | 10,180.             |                                 | 10,180. |
| 3               | Gross income (line 1 minus line 2)                           | 71,587.                        |                     | 7,329.                          | 78,916. |
| DIRECT EXPENSES | 4  | Cash prizes                    |                     |                                 |         |
|                 | 5  | Noncash prizes                 | 578.                |                                 | 578.    |
|                 | 6  | Rent/facility costs            | 500.                |                                 | 500.    |
|                 | 7  | Food and beverages             | 1,002.              |                                 | 1,002.  |
|                 | 8  | Entertainment                  |                     |                                 |         |
|                 | 9  | Other direct expenses          | 7,257.              |                                 | 347.    |
| 10              | Direct expense summary. Add lines 4- through 9 in column (d) |                                |                     |                                 | 9,684.  |
| 11              | Net income summary. Combine lines 3, column (d) and line 10  |                                |                     |                                 | 69,232. |

**Part III Gaming.** Complete if the organization answered 'Yes' to Form 990, Part IV, line 19, or reported more than \$15,000 on Form 990-EZ, line 6a.

| REVENUE         | (a) Bingo   | (b) Pull tabs/Instant bingo/progressive bingo | (c) Other gaming  | (d) Total gaming  |
|-----------------|---|---|---|---|
|                 | (Add col. (a) through col. (c))                                   |   |   |   |
| 1               | Gross revenue   |   |   |   |
| DIRECT EXPENSES | 2   | Cash prizes                                   |   |   |
|                 | 3   | Non-cash prizes                               |   |   |
|                 | 4   | Rent/facility costs                           |   |   |
|                 | 5   | Other direct expenses                         |   |   |
|                 | 6   | Volunteer labor                               | <input type="checkbox"/> Yes _____ %<br><input type="checkbox"/> No | <input type="checkbox"/> Yes _____ %<br><input type="checkbox"/> No |
| 7               | Direct expense summary. Add lines 2 through 5 in column (d)       |   |   |   |
| 8               | Net gaming income summary. Combine lines 1, column (d) and line 7 |   |   |   |

|  | YES | NO |
|--|-----|----|
| 9 Enter the state(s) in which the organization operates gaming activities: _____   |     |    |
| a Is the organization licensed to operate gaming activities in each of these states? .....   | 9a  |    |
| b If 'No,' explain:<br>-----   |     |    |
| 10a Were any of the organization's gaming licenses revoked, suspended or terminated during the tax year? .....   | 10a |    |
| b If 'Yes,' explain:<br>-----  |     |    |
| 11 Does the organization operate gaming activities with nonmembers? .....  | 11  |    |
| 12 Is the organization a grantor, beneficiary or trustee of a trust or a member of a partnership or other entity formed to administer charitable gaming? ..... | 12  |    |

**13** Indicate the percentage of gaming activity operated in:

|   |            |   |
|---|------------|---|
| <b>a</b> The organization's facility..... | <b>13a</b> | % |
| <b>b</b> An outside facility.....         | <b>13b</b> | % |

**14** Enter the name and address of the person who prepares the organization's gaming/special events books and records:

Name: ▶ -----

Address: ▶ -----

**15a** Does the organization have a contact with a third party from whom the organization receives gaming revenue?..... **15a**

**b** If 'Yes,' enter the amount of gaming revenue received by the organization \$ \_\_\_\_\_ and the amount of gaming revenue retained by the third party \$ \_\_\_\_\_.

**c** If 'Yes,' enter name and address of the third party:

Name: ▶ -----

Address: ▶ -----

**16** Gaming manager information

Name: ▶ -----

Gaming manager compensation ▶ \$ \_\_\_\_\_

Description of services provided: ▶ -----

Director/officer

Employee

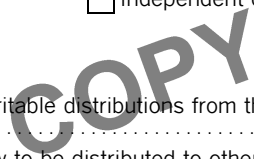
Independent contractor

**17** Mandatory distributions

**a** Is the organization required under state law to make charitable distributions from the gaming proceeds to retain the state gaming license?..... **17a**

**b** Enter the amount of distributions required under state law to be distributed to other exempt organizations or spent in the organization's own exempt activities during the tax year: ▶ \$

|            | YES | NO |
|------------|-----|----|
| <b>13a</b> |     |    |
| <b>13b</b> |     |    |
| <b>14</b>  |     |    |
| <b>15a</b> |     |    |
| <b>16</b>  |     |    |
| <b>17a</b> |     |    |



Supplemental Information to Form 990

2009

Open to Public  
Inspection

Complete to provide information for responses to specific questions on  
Form 990 or to provide any additional information.  
▶ Attach to Form 990.

Department of the Treasury  
Internal Revenue Service

Name of the organization

SOUTHERN OREGON HUMANE SOCIETY

Employer identification number

93-0391640

**Form 990, Part III, Line 1 - Organization Mission**

The Southern Oregon Humane Society is a nonprofit corporation dedicated to the humane treatment of dogs and cats in Southern Oregon. The Organization serves the community by providing shelter and adoption services for displaced pets, by reducing pet overpopulation through spay and neuter programs, by providing humane education, and by a commitment to a "full adoption" policy for the shelter.

**Form 990, Part VI, Line 11 - Form 990 Review Process**

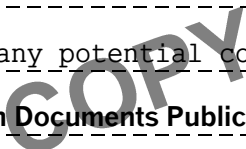
The Executive Director reviewed the Form 990 before it was filed and a copy was provided to the Board of Directors.

**Form 990, Part VI, Line 12c - Explanation of Monitoring and Enforcement of Conflicts**

New board members are required to review the conflict of interest policy. Annually, board members are asked to disclose any potential conflicts of interest.

**Form 990, Part VI, Line 19 - Other Organization Documents Publicly Available**

The Humane Society provides its governing documents, policies and financial statements to the public upon request. In addition, summarized financial information is provided annually in their newsletter.



Name of the organization

SOUTHERN OREGON HUMANE SOCIETY

Employer identification number

93-0391640

COPY